



Resolution 14 – 03 Revised

A resolution establishing a "No Parking" and a "No Parking Tow Away Zone" along portions of Baltimore Avenue.

Sponsored By: Mayor Steve Burg
2nd District Councilwoman Pat Frantz

Proposed: April 10, 2014

Results: Passed 5 In Favor, 0 Opposed with 2 Absent

Resolution 14 – 03

A resolution establishing a "No Parking" and a "No Parking Tow Away Zone" along portions of Baltimore Avenue.

WHEREAS, despite the installation of a parking lot at the "Bark Park" located on Baltimore Avenue, those utilizing the park are parking on the roadway in front of the park which is creating a hazardous situation; and

WHEREAS, by enacting Resolution 80-05 the Town agreed to prohibit parking on portions of what is today Baltimore Avenue; and

WHEREAS, the Mayor and Council wishes to honor the agreement with the State and at the same take into consideration, the concerns of area businesses, while removing the potential traffic hazards which exist along this roadway.

NOW THEREFORE, BE IT RESOLVED BY THE MAYOR AND COUNCIL OF THE TOWN OF ELSMERE AS FOLLOWS:

1. That a "No-Parking Zone" is hereby established on the Southerly curb line of Baltimore Avenue from its intersection with the eastern curb line of Northern Avenue and continuing easterly for a distance of 251 feet.
2. That a "No-Stopping Standing or Parking, Tow Away Zone, between the hours of 8:00pm and 6:00am" is hereby established on both sides of Baltimore Avenue beginning at a point 467 feet east of the Northerly curb line of Northern Avenue and continuing to the point where Baltimore Avenue dead ends at Kirkwood Highway, including the portion of the roadway that breaks off in a westerly direction and dead ends at South DuPont Road.

However , the area of this roadway located on the North Side of the roadway beginning 168 feet East of the Easterly curb of Northern Avenue and continuing to a point on the North side of the roadway ending 467 feet east of the Easterly curb of Northern Avenue; and

The area of the roadway on the South side of the roadway beginning 251 feet East of Baltimore Avenue and continuing to a point on the South side of the roadway ending 467 feet of the Easterly curb of Baltimore Avenue on the south side of the roadway, shall be designated as a "No-Stopping, Standing or Parking, Tow Away Zone" at all times.

3. Enforcement of the resolution shall not begin until May 11, 2014.

RESOLVED BY THE MAYOR AND COUNCIL OF THE TOWN OF ELSMERE ON THIS
10th DAY OF APRIL 2014.

Steve Burg
Mayor

Joann I. Personti
Secretary

Synopsis

Resolution 14-03

This resolution establishes both a "No-Parking" and a "No-Parking Tow Away" zones on portions of Baltimore Avenue.

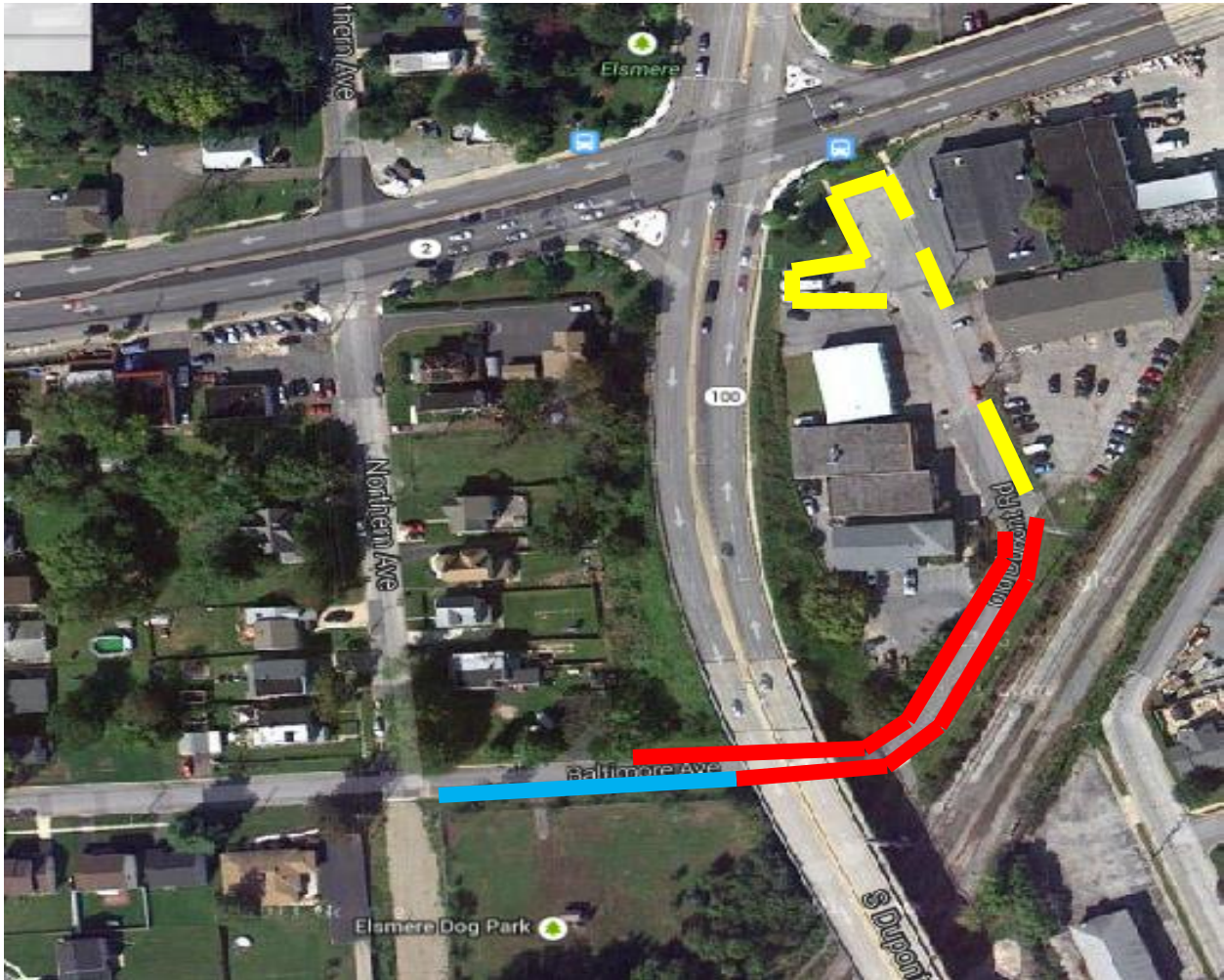
Fiscal Impact

The fiscal impact is anticipated to be approximately \$1,000.00 which would be expended on signage.

Note:

This Resolution was revised from its original version based upon a meeting with the affected businesses which was held on April 09, 2014.

ATTACHMENT 1



No-Parking Zone

No-Stopping, Standing or Parking, Tow Away Zone, between the hours of 8:00pm and 6:00am.

No-Stopping, Standing or Parking, Tow Away Zone