



Town Wide Clean-Up Day

Saturday, April 17, 2021

Drop-off: 7:00 AM to 11:00 AM

Important Numbers

Code Enforcement Department

11 Poplar Avenue
(302) 998-2215

Finance Department

11 Poplar Avenue
(302) 998-2215

Fire Department

1107 Kirkwood Hwy
(302) 999-0183

Library

11 Poplar Avenue
(302) 829-9814

Police

11 Poplar Avenue
(302) 998-1173

Public Works

215 New Road
(302) 655-6195

Town Hall

11 Poplar Avenue
(302) 998-2215

Republic Services

(302) 658-4097

Website

<https://www.townofelsmere.com>

Like Us on Facebook!

Town of Elsmere &
Elsmere Bureau of Police

Check out our T.V. Channel

Comcast Channel 966
Verizon FIOS Channel 31

**This is your chance to clean the clutter that
has accumulated in your homes and yards!**

**The Town of Elsmere has partnered with and greatly appreciates the
participation of the individuals and corporations listed below without whose
commitment and cooperation this community wide cleanup day would not have
been possible.**

State Senator Spiros Mantzavinos

State Representative John Mitchell

Republic Services

Paoli Services

Please be aware the procedure has changed.

**Items will need to be brought to any of the
drop-off locations provided throughout Town.**

**Proof of Elsmere Residency in the form of a
state issued ID is required at drop-off.**

COMMUNITY YARD SALE

Saturday, April 10, 2021

8:00AM – 4:00PM

See Inside for Details!

How Will the Clean-Up Day Work?

- **Residents must bring all items they wish to have collected to a designated drop off location no earlier than 7:00 AM on Saturday April 17, 2021 and no later than 11:00 AM on Saturday, April 17, 2021. (Items WILL NOT be collected at your home).**
- **Residents are required to bring a Delaware issued ID confirming residency within the Town of Elsmere. (If you do not bring your ID, item(s) will not be collected).**
- **Residents should be prepared to dispose of the items the plan to bring, if help is needed it is recommended you bring someone to help. Staff members will be at each location for monitoring purposes ONLY.**
- **Items WILL NOT be collected from homes, rear yards, or alley ways.**

The following is a list of designated drop-off locations throughout Town.

- District 1 – **Rosemont** – Taylor Rd. at Rosemont Dr.
- District 2 – **Elsmere Bark Park** – 400 Baltimore Ave.
- District 3 – **Joseph R. Walling Park** – Linden Ave.
- District 4 – **Maple Avenue Park** – Maple Ave. & Sycamore Ave
- District 5 – **Town Hall** – 11 Poplar Ave.
- District 6 – **Vilone Park** – Marvillo Ave. & Olga Ave.

Electronic and Hazardous Waste Disposal

The Town of Elsmere **WILL NOT** collect the following items.

The following are electronic items that **WILL NOT** be collected:

Computer components and/or parts, such as main frame computers, minicomputers, terminals, printers, personal computers, monitors, keyboards, mice, cables, laptop computers, notebook computers, notepad computers, copying equipment, as well as electronic typewriters and calculators.

Telecommunications Equipment, Telephone systems, terminals, telephones, telex, facsimile, pay telephones, cordless telephones, cellular telephones, answering machines, radio, television, electro acoustic radios, televisions, video cameras, video recorders, tape recorders, audio amplifiers, VCR's, cassette players, record players, toys, game boys and electronic toys.

ELECTRONICS ARE COLLECTED THROUGH THE DELAWARE SOLID WASTE AUTHORITY (DSWA)

Household Hazardous waste collection occurs every Wednesday from 10am – 2pm and the first Saturday of every month from 8:30am – 2pm, at the DSWA Delaware Recycle Center facility on Lambson Lane in New Castle.

(PLEASE SEE THE ATTACHED SCHEDULE FOR ALL DSWA COLLECTIONS).

The below items have been determined by the Delaware Solid Waste Authority as Household Hazardous Waste and therefore, as such **WE ARE UNABLE TO COLLECT THESE ITEMS:**

Product containers marked with words: “Warning”, “Hazardous”, “Flammable”, “Poisonous”, “Corrosive” or “Explosive”. See below for listing.

- **HOUSE:** full aerosol cans, bleach, chemistry kits, nail polish, polish removers, perfumes, disinfectants, drain cleaners, floor wax, mercury thermometers, moth balls, oven cleaner, smoke detectors, spot remover, toilet cleaner.
- **HOME HEALTH CARE:** used syringes.
- **EXPLOSIVES:** ammunition, firecrackers, gunpowder.
- **WORKSHOP:** corrosives, all paints, small compressed-gas cylinders, solvents, stains, strippers, thinners, varnish, wood preservatives, fluorescent bulbs.
- **GARDEN/YARD:** fungicides, herbicides, pesticides, pool chemicals.
- **AUTOMOTIVE:** antifreeze, auto batteries, degreasers, waste fuels, gasoline, kerosene, used motor oil mixed with other fuels, and Tires.

For disposal of these items’ residents should visit the Delaware Solid Waste Authority’s website at www.dswa.com; or see the attached collection schedule issued by DSWA.

In addition, any/all Prescription Drugs can be dropped off all year at:

Wilmington VA Hospital – Emergency Entrance

They are required to be in their original containers.

Illegal drugs are unable to be collected at this location.

2021 DSWA Collection Event Schedule



Household Hazardous Waste, Electronic Goods Collection & Document Shredding

Saturday, March 20

8:00am-2:00pm
Newark Recycling Center
470 Corporate Blvd, Newark

Saturday, May 22

8:00am-2:00pm
Fort Dupont
Wilmington Ave, Delaware City

Saturday, September 11

8:00am-2:00pm
St. Anne's School
211 Silver Lake Road, Middletown

Saturday, March 27

8:00am-2:00pm
Fenwick Island State Park
36859 Coastal Highway, Fenwick Island

Saturday, June 19

8:00am-2:00pm
Mount Pleasant Elementary School
500 Duncan Road, Wilmington

Saturday, September 25

8:00am-2:00pm
Indian River High School
29772 Armory Road, Dagsboro

Saturday, April 10

8:00am-2:00pm
Blue Hen Corporate Center
655 S. Bay Road, Dover

Saturday, July 17

8:00am-2:00pm
St. Marks High School
2501 Pike Creek Road, Wilmington

Saturday, October 9

8:00am-2:00pm
Frawley Stadium
801 Shipyard Drive, Wilmington

Saturday, April 17

8:00am-2:00pm
St. Anne's School
211 Silver Lake Road, Middletown

Saturday, July 24

8:00am-2:00pm
Milford Transfer Station
1170 S. DuPont Boulevard, Milford

Saturday, October 23

8:00am-2:00pm
Long Neck Elementary School
26064 School Lane, Millsboro

Saturday, May 8

8:00am-2:00pm
North Star Elementary
1340 Little Baltimore Road, Hockessin

Saturday, August 21

8:00am-2:00pm
Delcastle High School
1417 Newport Road, Wilmington

Saturday, November 13

8:00am-2:00pm
Newark Recycling Center
470 Corporate Blvd, Newark

Saturday, May 15

8:00am-2:00pm
Woodbridge Middle School
307 Laws Street, Bridgeville

Events Held Rain or Shine

Limit 2 File Boxes Per Person

*Events are subject to change
please visit dswa.com to confirm*

Document Shredding

Limit 2 File Boxes Per Person

Delaware Recycling Center

1101 Lambson Lane, New Castle
1st Saturday of Each Month 8:30am-2pm

Newark Recycling Center

470 Corporate Blvd, Newark
1st Wednesday of Each Month 10am-2pm

Cheswold Collection Station

54 Fork Branch Road, Cheswold
1st Friday of Each Month 10am-2pm

Jones Crossroads Landfill

28560 Landfill Lane, Georgetown
1st Monday of Each Month 10am-2pm

Household Hazardous Waste

Delaware Recycling Center

1101 Lambson Lane, New Castle
Every Saturday 8:30am-2pm

Newark Recycling Center

470 Corporate Blvd, Newark
Every Wednesday 10am-2pm

Cheswold Collection Station

54 Fork Branch Road, Cheswold
Every Friday 10am-2pm

Jones Crossroads Landfill

28560 Landfill Lane, Georgetown
Every Monday 10am-2pm

Electronics Recycling

Delaware Recycling Center

1101 Lambson Lane, New Castle
Monday-Friday 8:30am-3:30pm
Saturday 8:30am-2pm

Newark Recycling Center

470 Corporate Blvd, Newark
Monday-Saturday 8:30am-3:30pm

Cheswold Collection Station

54 Fork Branch Road, Cheswold
Monday-Saturday 8:30am-3:30pm

Jones Crossroads Landfill

28560 Landfill Lane, Georgetown
Monday-Saturday 8:30am-3:30pm

Latex Paint

New Collection Day for 2021

Delaware Recycling Center

1101 Lambson Lane, New Castle
Last Saturday of Each Month 8:30am-2pm

Newark Recycling Center

470 Corporate Blvd, Newark
Last Wednesday of Each Month 10am-2pm

Cheswold Collection Station

54 Fork Branch Road, Cheswold
Last Friday of Each Month 10am-2pm

Jones Crossroads Landfill

28560 Landfill Lane, Georgetown
Last Monday of Each Month 10am-2pm



Household Hazardous Waste Items



Household Items

- Full Aerosol Cans
 - Bleach
 - Chemistry Kits
- Nail Polish/Polish Removers
 - Perfumes
 - Disinfectants
 - Drain Cleaners
 - Floor Wax
- Mercury Thermometers
 - Moth Balls
 - Oven Cleaner
 - Spot Removers
 - Toilet Cleaner
- Florescent Bulbs

Workshop Items

- Corrosives
- Oil Based Paints
- Small Compressed Gas Tanks
 - Solvents
- Stains/Varnishes
- Strippers/Thinners
- Wood Preservatives

Explosives**

- Ammunition
- Gunpowder
- Fireworks

****EXPLOSIVES NOT ACCEPTED
at Weekly Collection Events**

Automotive Items

- Used Mixed Fuels
 - Antifreeze
 - Auto Batteries
 - Degreasers
- Waste Gasoline/Kerosene

Garden Items

- Fungicides
- Herbicides
- Pool Chemicals

Medical

Used Sharps*

***Please bring sharps in a
container you are willing to
part with**



Electronics Recycling Items



Equipment

- Computer Components
- Main Frame Computers
 - Mini Computers
 - Terminals
 - Printers
- Personal Computers
 - Monitors
 - Keyboards
 - Mice
 - Cables
- Laptop Computers
- Notebook Computers
- Notepad Computers
- Copying Equipment
- Electronic Typewriters
 - Calculators

Small Household Electronics

- Microwave Ovens
- Vacuum Cleaners
- Video Game Systems

Telecommunications Equipment

- Telephone Systems
 - Terminals
 - Telephones
 - Telex
 - Facsimile
- Pay Telephones
- Cordless Telephones
- Cellular Telephones
- Answering Machines

Radio, Television, Electroacoustic

- Radios
- Televisions
- Video Cameras
- Video Recorders
- Tape Recorders
- Audio Amplifiers
 - VCRs
- DVD Players
- Cassette Players
- Record Players

****NO DEHUMIDIFIERS, FREEZERS,
REFRIGERATORS OR
AIR CONDITIONERS ACCEPTED**

Document Shredding

2 File Boxes Per Person

**PRESCRIPTION DRUGS ARE NOT ACCEPTED AT THESE EVENTS
FOR INFORMATION ON PROPER DISPOSAL VISIT HELPI.SHEREDE.COM**



Town of Elsmere

Trash is collected each Thursday. Recycling and yard waste are collected on Friday. Major holidays will delay pickup by one day. Place carts out on the street the night before pickup and bring them in by 7 p.m. on the day of collection.



Waste Cart

For household trash items except hazardous materials, batteries, light bulbs and electronics.



Recycling Cart

For recyclable materials such as cardboard, paper, plastic containers and metal cans. Don't bag recyclables; put them directly into the cart. Plastic shopping bags are not recyclable curbside. Return these to your grocery store for recycling.



Yard Waste Cart

For yard waste items such as sticks, grass clippings and leaves. Don't bag yard waste; put it directly into the cart. Trim down large branches to 4 feet or less and bundle for curbside pickup.



Bulk Item Pickup

Request special pickup of bulk items such as furniture by calling **302.658.4097** or visit **www.republicservices.com/municipality/elsmere-de** for more information.

Visit **DSWA.com** for more information about what can go into your cart. Please contact **302.658.4097** or visit **www.republicservices.com/municipality/elsmere-de** for more information.

©2020 Republic Services, Inc.



We'll handle it from here.®

2020-2021 Recycling, Waste and Yard Waste Collection Calendar

Trash
 Holiday
 Recycling and Yard Waste

Trash is collected each Thursday. Recycling and yard waste are collected on Friday. Major holidays will delay pickup by one day. Place carts out on the street the night before pickup and bring them in by 7 p.m. on the day of collection.

July 2020						
Su	Mo	Tu	We	Th	Fr	Sa
			1	2	3	4
5	6	7	8	9	10	11
12	13	14	15	16	17	18
19	20	21	22	23	24	25
26	27	28	29	30	31	

August 2020						
Su	Mo	Tu	We	Th	Fr	Sa
						1
2	3	4	5	6	7	8
9	10	11	12	13	14	15
16	17	18	19	20	21	22
23	24	25	26	27	28	29
30	31					

September 2020						
Su	Mo	Tu	We	Th	Fr	Sa
		1	2	3	4	5
6	7	8	9	10	11	12
13	14	15	16	17	18	19
20	21	22	23	24	25	26
27	28	29	30			

October 2020						
Su	Mo	Tu	We	Th	Fr	Sa
				1	2	3
4	5	6	7	8	9	10
11	12	13	14	15	16	17
18	19	20	21	22	23	24
25	26	27	28	29	30	31

November 2020						
Su	Mo	Tu	We	Th	Fr	Sa
1	2	3	4	5	6	7
8	9	10	11	12	13	14
15	16	17	18	19	20	21
22	23	24	25	26	27	28
29	30					

December 2020						
Su	Mo	Tu	We	Th	Fr	Sa
		1	2	3	4	5
6	7	8	9	10	11	12
13	14	15	16	17	18	19
20	21	22	23	24	25	26
27	28	29	30	31		

January 2021						
Su	Mo	Tu	We	Th	Fr	Sa
					1	2
3	4	5	6	7	8	9
10	11	12	13	14	15	16
17	18	19	20	21	22	23
24	25	26	27	28	29	30
31						

February 2021						
Su	Mo	Tu	We	Th	Fr	Sa
	1	2	3	4	5	6
7	8	9	10	11	12	13
14	15	16	17	18	19	20
21	22	23	24	25	26	27
28						

March 2021						
Su	Mo	Tu	We	Th	Fr	Sa
	1	2	3	4	5	6
7	8	9	10	11	12	13
14	15	16	17	18	19	20
21	22	23	24	25	26	27
28	29	30	31			

April 2021						
Su	Mo	Tu	We	Th	Fr	Sa
				1	2	3
4	5	6	7	8	9	10
11	12	13	14	15	16	17
18	19	20	21	22	23	24
25	26	27	28	29	30	

May 2021						
Su	Mo	Tu	We	Th	Fr	Sa
						1
2	3	4	5	6	7	8
9	10	11	12	13	14	15
16	17	18	19	20	21	22
23	24	25	26	27	28	29
30	31					

June 2021						
Su	Mo	Tu	We	Th	Fr	Sa
		1	2	3	4	5
6	7	8	9	10	11	12
13	14	15	16	17	18	19
20	21	22	23	24	25	26
27	28	29	30			



We'll handle it from here.®



Notice of the Town of Elsmere's 2021 Biennial Municipal Election to be held on Saturday, April 24, 2021

The candidates for the Town's 2021 Biennial Elections are now known. Below is a list of candidates who filed for office and will be up for election on Saturday, April 24, 2021.

The polling place for all districts will be the Elsmere Town Hall located at #11 Poplar Avenue Elsmere, DE 19805. The polls will open at 10:00am and close at 7:00pm.

Voter Qualifications:

Every person domiciled in the Town of Elsmere who shall have reached the age of 18 years of age, who is a citizen of the United States, who has registered as a voter with the Department of Elections for New Castle County and who can prove the foregoing by proper identification, shall be entitled to vote at all regular and special municipal elections and referenda.

Persons appearing to vote shall present proof of identity and address. The identification shall be one or more of the following items that individually or together show the identity and address of the person:

(1) A current State of Delaware driver's license or ID card; (2) A uniformed service ID card; (3) Another current photo ID issued by the State of Delaware; (4) Photo ID issued by the U.S. Government, the voters employer, high school or higher education institution; (5) A current utility bill, bank statement, credit card statement, a paycheck or pay advice, or another type of bill or statement; (6) A lease or sales agreement; and/or Any other documentation that a person can reasonably and commonly accept as proof of identity and address; (7) Personal recognition by a majority of the Election Officers in the polling place can attest to a voter's identity and address.

Absentee Ballots:

Absentee Ballots will be available beginning Tuesday, February 23, 2021 for those who qualify. The qualifications for obtaining an Absentee Ballot are as follows.

Any qualified elector who is duly registered may vote by absentee ballot in any Town of Elsmere election for any of the following reasons:

- (1) Because such person is in the public service of the United States or of this State, or is a citizen of the United States temporarily residing outside the territorial limits of the United States and the District of Columbia, or such person's spouse or dependents when residing with or accompanying the person, or is absent from this State because of illness or injury received while serving in the armed forces of the United States;
- (2) Because such person is in the armed forces of the United States or the Merchant Marines of the United States, or attached to and serving with the armed forces of the United States in the American Red Cross, Society of Friends, or United Service Organizations; or
- (3) Because of the nature of such person's business or occupation, including the business or occupation of providing care to a parent, spouse or that person's child who is living at home and requires constant care due to illness or injury;
- (4) Because such person is sick or physically disabled; *(Under the 6th modification of the Omnibus declaration of a State of Emergency for the State of Delaware due to a public health threat (dated February 4, 2021), this option may be used by any qualified voter wishing to vote by Absentee Ballot for any reason due to the COVID-19 Pandemic)*
- (5) Because such person is absent from the Town of Elsmere while on vacation;
- (6) Because such person is unable to vote at a certain time or on a certain day due to the tenets or teachings of that person's religion; or
- (7) Because such person is unavoidably absent from the Town on the day of the election.

An elector desiring to vote by absentee ballot in a Town of Elsmere election for which the elector is qualified may request an absentee ballot by completing a written affidavit provided by the Town no later than 12:00 noon the day before the election. To request an affidavit and absentee ballot please contact Town Hall at (302) 998-2215.

The Candidates for the April 24, 2021 Election are as Follows:

For the Office of Mayor:

Mr. Brian E. Hurst
Mr. Eric Scott Thompson

For 1st District Council:

Mrs. Marianne C. Skipski was the only candidate to file for the Office of 1st District Councilperson and therefore, under the law she is automatically elected to office.

For 2nd District Council:

Ms. Sally A. Jensen was the only candidate to file for the Office of 2nd District Councilperson and therefore, under the law she is automatically elected to office.

For 3rd District Council:

Ms. Mary A. Steppi was the only candidate to file for the Office of 3rd District Councilperson and therefore, under the law she is automatically elected to office.

For 4th District Council:

Mr. Charles G. McKewen was the only candidate to file for the Office of 4th District Councilperson and therefore, under the law he is automatically elected to office.

For 5th District Council:

Mrs. Joann I. Personti was the only candidate to file for the Office of 5th District Councilperson and therefore, under the law she is automatically elected to office.

For 6th District Council:

Ms. Dawn DiBiao
Mr. Vincent R. Shavico

The following are the members of the Town of Elsmere Board of Elections.

The members of the Board of Elections may be contacted at the addresses listed below or at the phone numbers provided below.

Ms. Shirley Posey
3 Jefferson Ave
Elsmere, DE 19805
or by telephone at (302) 668-9876

Mrs. Ruthie Drummond-Parson
1015 Dover Ave
Elsmere, DE 19805
or by telephone at (302) 584-8958

Ms. Kathleen Aiken
1201 Spruce Ave
Elsmere, DE 19805
or by telephone at (302) 442-2331



Storm Drains to Creeks **EVERYTHING'S CONNECTED** to our waterways

Runoff is rain water that “runs off” across land instead of seeping into the ground. Many **storm drains** empty directly into streams. Runoff collects pollutants such as leaky motor oil, pet waste and litter from our streets, sidewalks and yards and washes it into storm drains.

What you can do to curb runoff:

- 1) Put dog waste in the toilet or trash can, not in street or storm drain. Dog waste carries DISEASE-CAUSING BACTERIA into our water supply.
- 2) Put trash in trash cans and clean up litter so it doesn't end up into storm drains and end up in our streams and rivers.
- 3) Do not pile leaves and other yard waste near streams, drainage channels or gutters where they can blow or wash into creeks. Use designated yard waste collection containers or paper bags for curbside yard waste collection.
- 4) Do not blow leaves or grass clippings off your property into streets, streams, ponds or drainage swales.
- 5) Recycle grass clippings and their nutrients on your lawn. Use a mulching lawnmower to recycle remaining leaves into your lawn in the fall!
- 6) Compost leaves and grass clippings along with yard waste. Select a location removed from streams, ponds and wetlands.
- 7) Use Pesticides and fertilizers sparingly.
- 8) Repair auto leaks.
- 9) Dispose of household hazardous wastes, used auto fluids (antifreeze, oil, etc.), and batteries at designated collection or recycling locations.
- 10) Use a commercial car wash or wash your car on a lawn or other unpaved surface.
- 11) Clean paint brushes in a sink, not outdoors. Properly dispose of excess paints through a household hazardous waste collection program.
- 12) Sweep up and properly dispose of construction debris such as concrete and mortar.

****Remember****

anything that enters the storm sewer system is discharged untreated into waterbodies we use for swimming, fishing and drinking water.

Water Pollution is a Crime. Don't Stand For It. **STOPPIT**

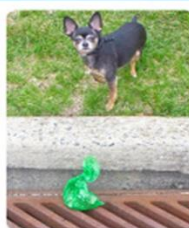
If you see pollution going into or out of the storm sewer system, report it!



Vehicle Fluids



Household Waste



Pet Waste



Yard Waste

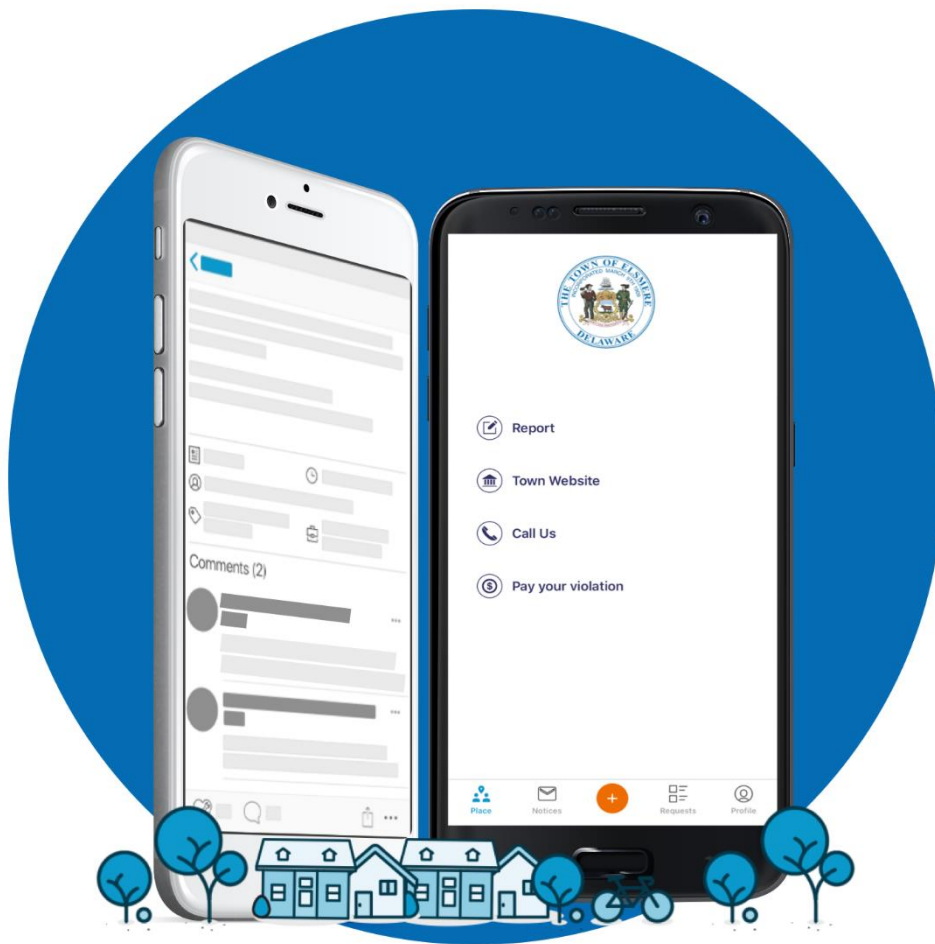


Call or text **(302) STOPPIT**

Email hotline@302stoppit.org or visit www.302stoppit.org

City of Wilmington residents can also use the Report It/ Resolve It App

Prevent Pollution



The SeeClickFix application for Elsmere is the fastest, easiest way for you to submit non-emergency requests to your community, stay updated, and initiate change in your community.



Powered by **SeeClickFix**

COMMON CODE ENFORCEMENT VIOLATIONS TO AVOID

- Trash cans placed at the curb after being serviced by Republic Services.
- Bulk items placed outside without a scheduled pick up with Republic Services.
 - To schedule a special pick up – Call Republic Service at 302-658-4097.
- Inoperable vehicles (flat tires, dismantled or unregistered).
 - All vehicles should have a valid registration sticker placed on the vehicle license plate.
- Junk/Debris – Properties should be cleaned-up.
- Grass/weeds more than 8 inches high.