



Town Wide Clean-Up Day Saturday, April 20, 2024

Important Numbers

Code Enforcement Department

11 Poplar Avenue
(302) 998-2215

Finance Department

11 Poplar Avenue
(302) 998-2215

Fire Department

1107 Kirkwood Hwy
(302) 999-0183

Library

11 Poplar Avenue
(302) 829-9814

Police

11 Poplar Avenue
(302) 998-1173

Public Works

215 New Road
(302) 655-6195

Town Hall

11 Poplar Avenue
(302) 998-2215

Republic Services

(302) 658-4097

Website

<https://www.townofelsmere.com>

Like Us on Facebook!

Town of Elsmere &
Elsmere Bureau of Police

Check out our T.V. Channel

Comcast Channel 966
Verizon FIOS Channel 31

**This is your chance to clean the clutter that
has accumulated in your homes and yards!**

**The Town of Elsmere values the partnerships made with the individuals
and corporations listed below. Without their participation, this community
cleanup day would not be possible.**

State Senator Spiros Mantzavinos

State Representative DeShanna Neal

Republic Services

Paoli Services

**Please be aware the
procedure has changed.**

**Items will need to be brought to any of the
drop-off locations provided throughout Town.**

**Proof of Elsmere Residency in the form of a
state issued ID is required at drop-off.**

COMMUNITY YARD SALE

Saturday, April 13, 2024

8:00AM – 4:00PM

See Inside for Details!

How Will the Clean-Up Day Work?

- **Residents must bring all items they wish to have collected to a designated drop off location no earlier than 7:00 AM on Saturday, April 20, 2024 and no later than 11:00 AM on Saturday, April 20, 2024. (Items WILL NOT be collected at your home).**
- **Residents are required to bring a Delaware issued ID confirming residency within the Town of Elsmere. (If you do not bring your ID, item(s) will not be collected).**
- **Residents should be prepared to dispose of the items they plan to bring, if help is needed it is recommended you bring someone to help. Staff members will be at each location for monitoring purposes ONLY.**
- **Items WILL NOT be collected from homes, rear yards, or alleyways.**

The following is a list of designated drop-off locations throughout Town.

- District 1 – **Rosemont** – Iron Works Hall, 203 Old Dupont Road
- District 2 – **Elsmere Bark Park** – 400 Baltimore Ave.
- District 3 – **Joseph R. Walling Park** – Linden Ave.
- District 4 – **Maple Avenue Park** – Maple Ave. & Sycamore Ave.
- District 5 – **Town Hall** – 11 Poplar Ave.
- District 6 – **Vilone Park** – Marvillo Ave. & Olga Ave.

Electronic and Hazardous Waste Disposal

The Town of Elsmere **WILL NOT** collect electronic items.

The following are electronic items that **WILL NOT** be collected:

Computer components and/or parts, such as main frame computers, minicomputers, terminals, printers, personal computers, monitors, keyboards, mice, cables, laptop computers, notebook computers, notepad computers, copying equipment, as well as electronic typewriters and calculators.

Telecommunications Equipment, Telephone systems, terminals, telephones, telex, facsimile, pay telephones, cordless telephones, cellular telephones, answering machines, radio, television, electro acoustic radios, televisions, video cameras, video recorders, tape recorders, audio amplifiers, VCR's, cassette players, record players, toys, game boys and electronic toys.

ELECTRONICS ARE COLLECTED THROUGH THE DELAWARE SOLID WASTE AUTHORITY (DSWA)

**(PLEASE SEE THE ATTACHED SCHEDULE FOR ALL
DSWA COLLECTIONS).**

The below items have been determined by the Delaware Solid Waste Authority as Household Hazardous Waste and therefore, as such **WE ARE UNABLE TO COLLECT THESE ITEMS:**

Product containers marked with words: "Warning", "Hazardous", "Flammable", "Poisonous", "Corrosive" or "Explosive". See below for listing.

- **HOUSE:** full aerosol cans, bleach, chemistry kits, nail polish, polish removers, perfumes, disinfectants, drain cleaners, floor wax, mercury thermometers, moth balls, oven cleaner, smoke detectors, spot remover, toilet cleaner.
- **HOME HEALTH CARE:** used syringes.
- **EXPLOSIVES:** ammunition, firecrackers, gunpowder.
- **WORKSHOP:** corrosives, all paints, small compressed-gas cylinders, solvents, stains, strippers, thinners, varnish, wood preservatives, fluorescent bulbs.
- **GARDEN/YARD:** fungicides, herbicides, pesticides, pool chemicals.
- **AUTOMOTIVE:** antifreeze, auto batteries, degreasers, waste fuels, gasoline, kerosene, used motor oil mixed with other fuels, and Tires.

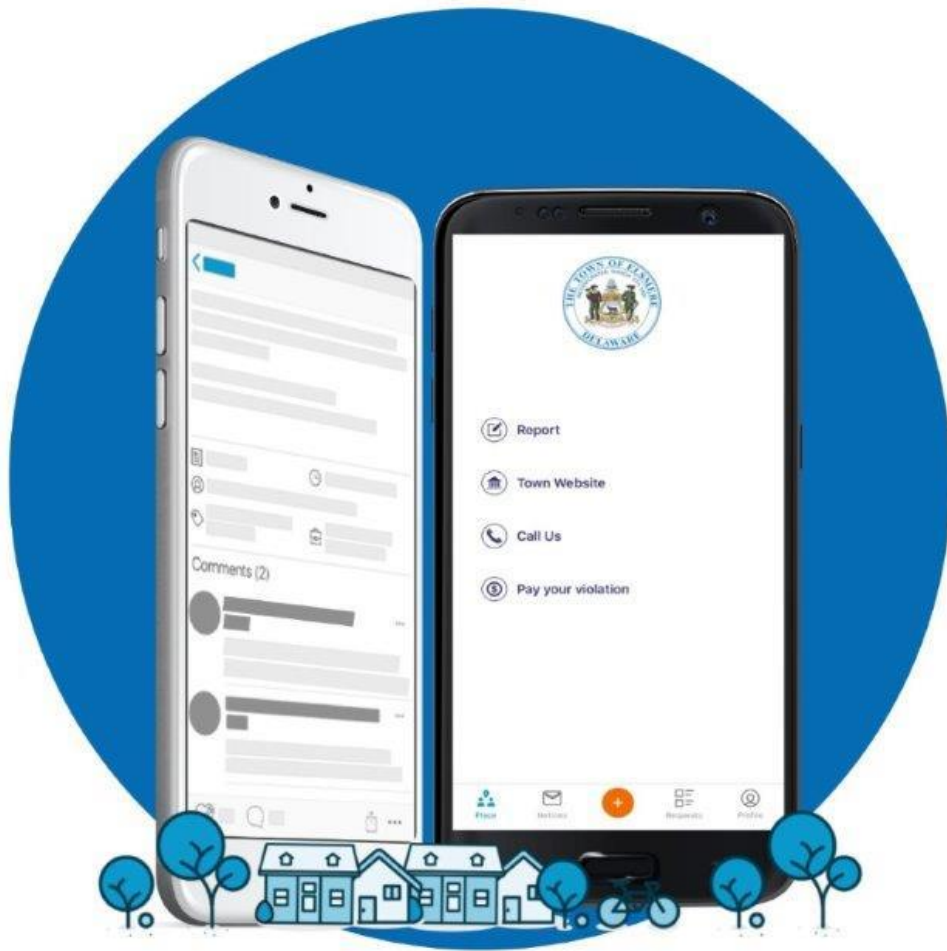
For disposal of these items, residents should visit the Delaware Solid Waste Authority's website at www.dswa.com; or see the attached collection schedule issued by DSWA.

In addition, any/all Prescription Drugs can be dropped off all year at:

Wilmington VA Hospital – Emergency Entrance

They are required to be in their original containers.

Illegal drugs are unable to be collected at this location.



The SeeClickFix application for Elsmere is the fastest, easiest way for you to submit non-emergency requests to your community, stay updated, and initiate change in your community.



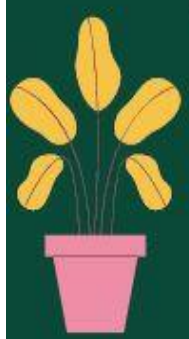
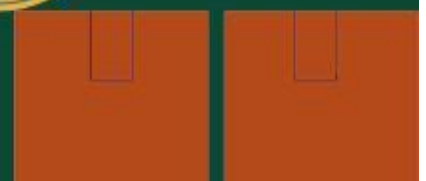
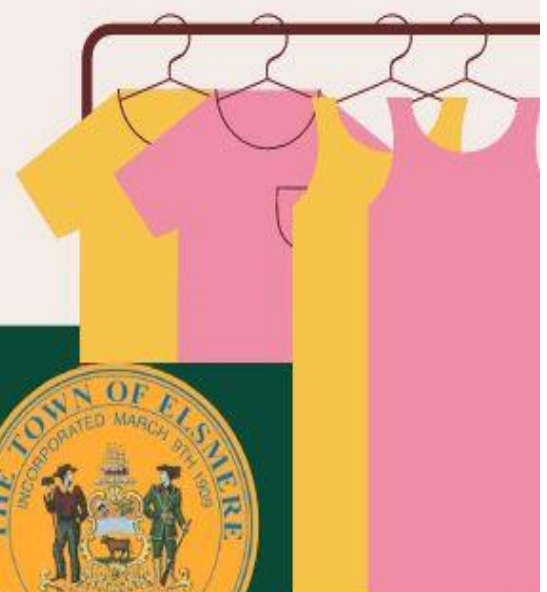
Powered by **SeeClickFix**

THE TOWN OF ELSMERE'S

COMMUNITY YARD SALE

April 13th, 2024 from
8:00am to 4:00pm

Raindate: April 14th, 2024



HEALTH AND WELLNESS EVENT

IMPACT LIFE



FREE

EVENT HIGHLIGHTS

- VENDORS
- KIDS ACTIVITIES
- MUSIC
- FOOD
- RAFFLE
- RESOURCES



10 AM - 2 PM

18

MAY

ELSMERE TOWN HALL

11 POPLAR AVENUE
WILMINGTON DE 19805



2024 Collection Events



HOUSEHOLD HAZARDOUS WASTE
ELECTRONIC GOODS COLLECTION
PAPER SHREDDING

HOURS: 8:00AM-2:00PM

RAIN OR SHINE

MARCH 16, 2024	NEWARK RECYCLING CENTER	470 CORPORATE BLVD. NEWARK
MARCH 23, 2024	FENWICK ISLAND STATE PARK	36859 COASTAL HWY. FENWICK ISLAND
APRIL 13, 2024	ST. ANNE'S SCHOOL	211 SILVER LAKE RD, MIDDLETOWN
APRIL 20, 2024	REHOBOTH ELEMENTARY	500 STOCKLEY ST. REHOBOTH BEACH
MAY 11, 2024	INDEPENDENCE SCHOOL	1300 PAPER MILL RD., NEWARK
MAY 18, 2024	SEAFORD HIGH SCHOOL	399 NORTH MARKET ST, SEAFORD
JUNE 15, 2024	SMYRNA MIDDLE SCHOOL	700 DUCK CREEK PARKWAY, SMYRNA
JUNE 22, 2024	MT. PLEASANT HIGH SCHOOL	5201 WASHINGTON ST. EXT, WILMINGTON
JULY 13, 2024	ST. MARK'S HIGH SCHOOL	2501 PIKE CREEK RD, WILMINGTON
JULY 20, 2024	MILFORD TRANSFER STATION	1170 S. DUPONT BLVD. MILFORD
AUGUST 10, 2024	DELCASTLE HIGH SCHOOL	1417 NEWPORT RD., WILMINGTON
SEPTEMBER 14, 2024	ST. ANNE'S SCHOOL	211 SILVER LAKE RD, MIDDLETOWN
SEPTEMBER 21, 2024	INDIAN RIVER HIGH SCHOOL	29772 ARMORY RD. DAGSBORO
OCTOBER 12, 2024	BLUE ROCKS STADIUM	801 SHIPYARD DR. WILMINGTON
OCTOBER 19, 2024	LOVE CREEK ELEMENTARY	19488 JOHN J WILLIAMS HWY, LEWES
NOVEMBER 9, 2024	NEWARK RECYCLING CENTER	470 CORPORATE BLVD. NEWARK

ACCEPTED ITEMS

HOUSEHOLD HAZARDOUS WASTE

Household Items

- Full Aerosol Cans
- Bleach
- Nail Polish/Polish Removers
- Perfumes
- Disinfectants
- Drain Cleaners
- Floor Wax
- Mercury Thermometers
- Moth Balls
- Oven Cleaner
- Spot Removers
- Toilet Cleaner
- Fluorescent Bulbs
- Pool Chemicals

Explosives

- Ammunition
- Gunpowder
- Fireworks

Automotive

- Used Mixed Fuels
- Antifreeze
- Auto Batteries
- Degreasers
- Waste Gasoline/Kerosene
- Garden Items
- Fungicides
- Herbicides

Medical

- Used Sharps

ELECTRONICS

Examples of accepted items

- Televisions
- Printers
- Copiers/Scanners
- Fax Machines
- Laptops/Tablets
- iPods/MP3 Players
- PC Speakers
- Keyboards
- VCR/DVD/CD Players
- Modems
- Hard Drives
- Cell Phones
- Telephones
- Computer Monitors
- Microwave Ovens
- Vacuum Cleaners
- Video Game Systems

Paper Shredding

2 Boxes Per Person

NOT ACCEPTED

- Unknown Substances
- Containers with less than 1" of Material
- Radioactive Waste
- Prescription Medications
- Asbestos
- Dehumidifiers
- Freezers
- Refrigerators
- Air Conditioners

MONTHLY/WEEKLY
COLLECTION SCHEDULES
ON REVERSE SIDE



DELAWARE SOLID WASTE AUTHORITY

- Workshop Items
- Oil Based Paints
- Small Compressed Gas Tanks
- Solvents
- Stains/Varnishes
- Strippers/Thinners
- Wood Preservatives

WEEKLY & MONTHLY COLLECTION EVENTS

NEW CASTLE COUNTY

Delaware Recycling Center
1101 Lambson Lane, New Castle

Household Hazardous Waste
Every Saturday 8:30am-2pm

Paper Shredding
1st Saturday Of Each Month 8:30am-2pm

Electronics Recycling
Monday-Friday 8:30am-3:30pm
Saturday 8:30am-2pm

Latex Paint Collection
Last Saturday Of Each Month 8:30am-2pm

Newark Recycling Center
470 Corporate Blvd, Newark

Household Hazardous Waste
Every Wednesday 10am-2pm

Paper Shredding
1st Wednesday Of Each Month 10am-2pm

Electronics Recycling
Monday-Saturday 8:30am-3:30pm

Latex Paint Collection
Last Wednesday Of Each Month 10am-2pm

KENT COUNTY

Cheswold Collection Station
54 Fork Branch Road, Cheswold

Household Hazardous Waste
Every Friday 10am-2pm

Paper Shredding
1st Friday Of Each Month 10am-2pm

Electronics Recycling
Monday-Saturday 8:30am-3:30pm

Latex Paint Collection
Last Friday Of Each Month 10am-2pm

SUSSEX COUNTY

Jones Crossroads Landfill
28560 Landfill Lane, Georgetown

Household Hazardous Waste
Every Monday 10am-2pm

Paper Shredding
1st Monday Of Each Month 10am-2pm

Electronics Recycling
Monday-Saturday 8:30am-3:30pm

Latex Paint Collection
Last Monday Of Each Month 10am-2pm

****Explosives NOT ACCEPTED at Weekly Collection Events**

www.dswa.com 1-800-404-7080

Water Pollution is a Crime. Don't Stand For It. STOPPIT

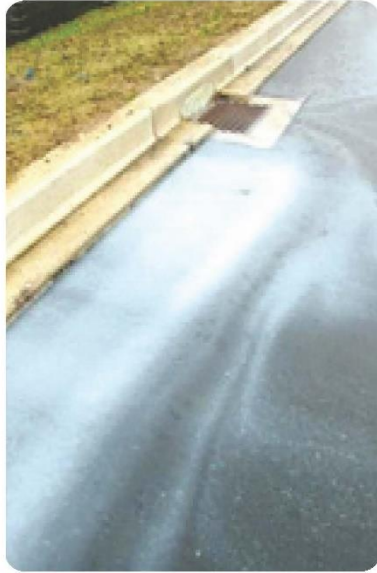
If you see pollution going into or out of the storm sewer system, report it!



Prevent Pollution



Vehicle Fluids



Household Waste



Pet Waste



Yard Waste



 Call or text **(302) STOPPIT**
 Email hotline@302stoppit.org or visit www.302stoppit.org

Summer Stormwater Management Tips

1) Wash your car at a car wash. Soapy run-off from vehicle washing in your driveway can enter the stormdrain, however commercial car washes filter and re-use their water.



2) Raise your mower height. Raising your mower height to at least 3 inches will allow your yard to absorb more rain water.



3) Do not blow grass clippings off of your property. Grass clippings can carry fertilizers into the creek. Either bag up grass clippings, or recycle them on your yard to return vital nitrogen to your lawn.



4) Increase your garden area. Plant native shrubs, trees and perennials on your property. Native plants can absorb more stormwater than turf grass and provide habitat areas for wildlife.